

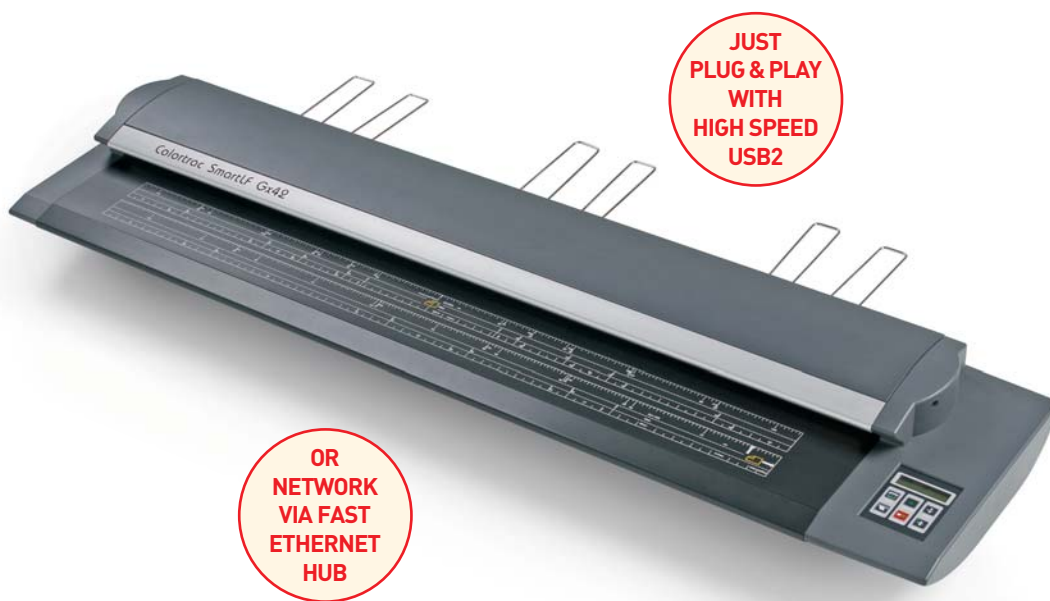
SmartLF Gx+ /Gx+ T56

25"
42"
56"

LARGE FORMAT CCD SCANNER RANGE

SmartLF Gx+ 56 wide format scanners are ideal for reprographics bureaus and copyshops, graphic design, fine art, mapping and GIS professionals.

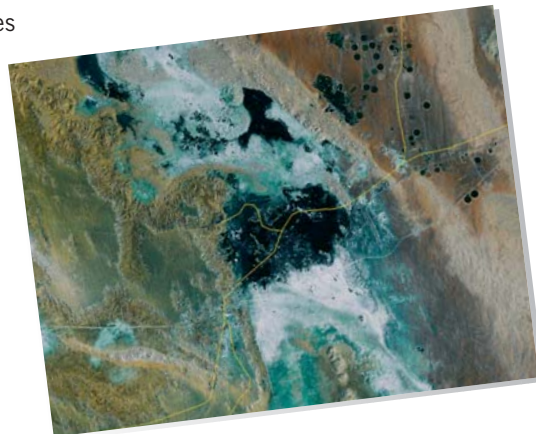
- 56" extra wide image width
- True 1200dpi optical resolution
- 9600 extended resolution
- Optional thick media scanning
- Instant-on LED illumination – no fluorescent tubes!
- 48-bit colour capture
- Up to 2ips colour scanning speed
- Gigabit Ethernet or USB



Clear, simple controls and easy access for cleaning

Maximise professional wide format reprographics productivity and profits with the SmartLF Gx+/Gx+ T56's high colour fidelity and detailed imaging on extra wide and thick media.

The SmartLF Gx+ /Gx+ T56 scanner uses today's most advanced, high definition extra wide format full colour scanning and copying technology. An investment in SmartLF Gx+/Gx+ T56's unmatched 56" wide, true 1200dpi optical technology extends your scanning options from standard, thin sheets up to oversized, thick mounted originals. It provides state-of-the-art benefits for years to come!



 **Colortrac**
Our Business is Your Image

Scan confident. Scan Colortrac.

SmartLF Gx+/Gx+ T56

LARGE FORMAT CCD SCANNER RANGE

28"

42"

56"

The SmartLF Gx+ 56 scanner range incorporates Colortrac 48-bit primary point digital image capture, industry-leading 1200dpi optical resolution and patented adaptive stitching technology to deliver exceptional scans with a high dynamic range, sharp image detail and accurate colour fidelity. With a choice of plug and play USB2 or high speed Gigabit network connections, Gx+ provides high levels of extra wide format productivity. With the best price/performance ratio in professional CCD quality graphics scanning, the Gx+ 56 scanners are a long-term, cost-effective investment.

Automatic Thick media scanning at the touch of a button

Extra-wide, extra thick media is no obstacle to the Gx+ T56! Super-size documents up to 58" wide (56" image width) and up to a 0.8" (2cm) thick glide through the SmartLF Gx+ T56! Suits all standard and oversized drawings, charts and diagrams; posters, banners, signs and display material; architectural sketches and renderings; detailed maps, satellite images; artwork, graphic design, photographs and fine art.

The SmartLF Gx+/Gx+ T56's advanced 48-bit CCD technology, industry leading 1200dpi optical resolution and the latest bright white LED illumination delivers superb colour fidelity and high definition detail. The Colortrac developed 2+3 all wheel drive Active Paper Transport (APT) ensures consistent glass contact and sensitive, reliable throughput on all types of wide media, from delicate paper to heavy mylar. One touch initiates automatic Motorised Thick Media adjustment for scanning mounted originals on media up to 0.8"/20mm thick. Designed for Energy Star compliance, when not in use, the scanner powers down into an energy and money-saving sleep mode, leaving it ready for instant use! With no fluorescent tubes, there's no warm-up, no waiting. Just immediate productivity from instant-on!

The SmartLF Gx+/Gx+ T56's scanner is designed for Energy Star compliance - features that save you money and protect the environment.

Whatever the application, SmartLF Gx+ 56 scanners are easy to use, customer installable and provide high performance, great images and exceptional value for money - straight out of the box.

Software Solutions

All SmartLF scanners are supplied with easy-to-use, SmartLF multi-purpose scanner operating software at no extra cost. For applications where more features are required, optional Colortrac and third party software is available to enhance the capability and performance of the scanning system.

THREE versions available with standard (0.08"/2mm) and thick (0.8"/20mm) media options:

Gx+ 56m/Gx+ T56m

captures wide dynamic range of B/W photos and CAD drawings at speeds up to 4ips.

Gx+ 56c/Gx+ T56c

adds 48-bit wide colour gamut scanning with colour scan speed up to 1ips.

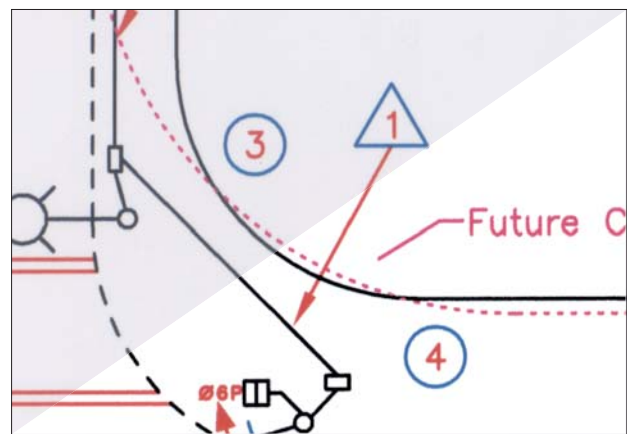
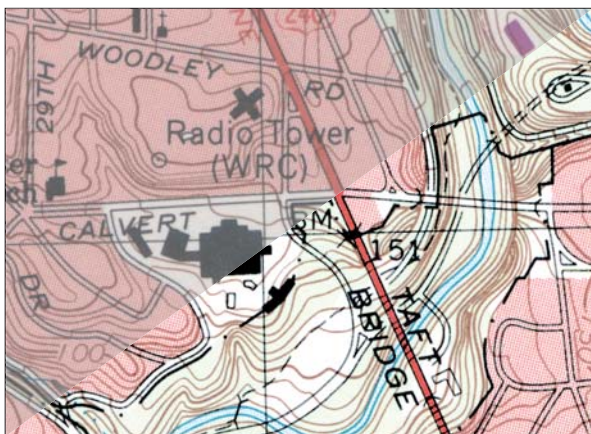
Gx+ 56e/Gx+ T56e

adds express wide colour gamut scanning with colour scan speeds up to 2ips.

Easy internet upgrades- m and c models can be easily upgraded to e models.

Extra large format graphics scanning for:

- Copy Shops/Imaging Service Bureaux
- Colour Graphic Digital Print and Display
- Signage, Photographic, Museums
- Advertising, Graphic Design, Fine Art
- Cadastral Surveys, Mapping and GIS
- Architectural, Engineering, Construction



SmartLF Gx+ 56/Gx+ T56

LARGE FORMAT PROFESSIONAL QUALITY CCD SCANNERS

The SmartLF Gx+ 42 & Gx+ T42 (thick media) scanner models are available in three performance levels with features optimised for different applications. If your requirements change, the m and c models can be upgraded on-site at your premises quickly and easily using our simple scanner upgrade process via email.

● standard ◊ optional — not supported

| Feature | SmartLF Gx+ / Gx+ T56 wide format scanner model: | m | c | e |
|------------------------------------------------------------------------------------------------------------------------------------------|------------------------------------------------------------------------------------------------------------------------------------------------------------------------------------------------------------------------------------------------------------------------------------------------|------|------|------|
| Maximum image width | 56in (142.3cm) Image length: not limited by scanner | ● | ● | ● |
| Maximum media width ¹ | 61.8in (157cm) Thickness: Gx+ 0.08in (2mm) / Gx+ T 0.8in (20mm) | ●/◊ | ●/◊ | ●/◊ |
| Scan speeds ² in/sec | 24-bit RGB colour @ 200dpi ³ (Turbo Mode available but not used) 8-bit greyscale & monochrome @ 200dpi ³ (Turbo Mode available but not used) | — | 1.00 | 2.00 |
| Scan accuracy ⁴ | +/-0.1% +/-1 pixel | ● | ● | ● |
| Optical resolution | Dots per inch (dpi) User selection of 1200x1200 or 600x600 modes | 1200 | 1200 | 1200 |
| Extended resolution ⁵ | Linear interpolation from 100 to 9600dpi in 1 dpi steps | 9600 | 9600 | 9600 |
| Scan modes | 16.7 million colour RGB (24-bit) 256 & 16 colour RGB adaptive indexed colour palette (8-bit & 4-bit) ⁶ 256 level greyscale (8-bit) Black & White (1-bit) | — | ● | ● |
| Digital image processing (Colortrac software options provide a comprehensive range of 'post scan' image processing filters and tools) | 2D Intelligent Adaptive Thresholding (IAT) (1-bit mode) Fixed Threshold Black & White (1-bit mode) Dynamic Normalisation Application (DNA) with 16-bit super sampled data | ● | ● | ● |
| Colour space | Normalised / linearised sRGB or similar | — | ● | ● |
| Colour image processing | Gamma, brightness, black & white point adjustment | — | ● | ● |
| Advanced 2+3 wheel-drive | Dual, precision ground drive rollers | ● | ● | ● |
| Active Paper Transport (APT) | Dual, all-wheel-drive contour rollers with high grip rubber tyres Single media hold down roller optimised for superior L/R stitch Face down, front loading, rear exit media path with side or centre justification Automatic media size detection with reliable optical media sensors | ● | ● | ● |
| Motorised Thick Media (MTM) adjustment (Gx+T range) | Adapts the APT for media up to 20mm (0.8in) thick Automatic detection of optimum grip roller pressure Simple operation from scanner control panel at the touch of a button | ◊ | ◊ | ◊ |
| All digital image sensor technology | 8 x quadri-linear CCDs each with 10,800 pixels (RGB + monochrome) Rigid monocoque chassis provides accurate camera positioning & location 48-bit primary point colour image capture 16-bit primary point greyscale image capture Panchromatic monochrome and black & white | ● | ● | ● |
| Light source | Dual 2D extra long-life LED light system for optimum object illumination and instant-on scanning capability | ● | ● | ● |
| Optics | 8 x micro lens with integral infra red filter | ● | ● | ● |
| User status & One Touch operation | LCD scanner control panel provides easy walk up operation and user selection of scanner mode with stop, forward, rewind, scan & copy buttons. User selectable IP address, local language options and panel overlay. ⁷ Open / Close buttons (Gx+ T range) | ● | ● | ● |
| Scanner maintenance and user replaceable parts | Customer installable, plug 'n' play scanner. Precision media calibration with DNA 16-bit super sampled data Automatic digital stitch adjustment / Easy access for cleaning Chemically treated, scratch resistant scan glass with magnetic mounts | ● | ● | ● |
| SmartLF All-in-One software (included) | Colortrac SmartLF ready to run software with: Scan-to-file with real time image viewer Scan-to-copy with real time image viewer Scan-to-email with real time image viewer Scanner drivers, TIFF, JPEG, PNG, PDF file formats | ● | ● | ● |
| Interface (included) | Gigabit ethernet & USB2 / 2m data cables / local power cable Windows Image Acquisition (WIA) / Still Image Interface (STI) ⁸ | ● | ● | ● |
| Dimensions & weight | 72.5in wide x 7in high x 14.6in deep (184 x 18 x 37cm) 126Lbs (57kg) | ● | ● | ● |
| Power requirements | External power supply 100~250 VAC autosensing +/-10%, 50~60Hz, 180VA (scng) 5VA (stdby) | ● | ● | ● |
| Environmental impact | Designed for ENERGY STAR compliance, RoHS compliant, polymer foam free packaging & recycle friendly components | ● | ● | ● |
| Operating conditions | 10°C – 35°C, 35% - 80% RH non-condensing | ● | ● | ● |
| Scan software | ScanWorks ~ professional scan-to-archive & post scan image processing | ◊ | ◊ | ◊ |
| Copy software | CopySmart ~ professional scan-to-print with IT8 colour matching | ◊ | ◊ | ◊ |
| EDC software | ISIS™ driver ~ connect seamlessly to EDM systems & database | ◊ | ◊ | ◊ |
| Scanner accessories | Floor Stand 32.3in high x 21.7in deep (82 x 55cm) 31Lbs (14kg). Paper catch basket (floor stand is required). PC & LCD monitor mounting kit (floor stand is required) | ◊ | ◊ | ◊ |

[1] Media wider than 57in (144.8cm) may exhibit some degradation in the image. [2] The scan rate is proportional across the full range of resolutions supported by the scanner. Actual scan times will depend on the host system performance. Quoted top speeds may be limited by the effective bandwidth of the USB2 or ethernet i/f and are not guaranteed for all media types. [3] Turbo Mode speeds can be twice as fast as regular non-turbo speed ratings but offer virtually no image quality gains over scans made at half the quoted resolution. Turbo mode scanning uses digital software interpolation to double the resolution in the paper scan direction to simulate higher resolution scanning. [4] The achieved scan accuracy may vary depending on the operating environment and the type & thickness of media. Colortrac measures accuracy by scanning a paper original printed with a square target. The pixel co-ordinates of the target image are measured and compared with the known dimensions of the original. SmartLF Gx+ scanners are tested at 200C +/- 30C, 60% +/- 10% RH non-condensing. [5] The maximum resolution & size selectable for an image is limited by the file format specified, the available disk space & the computer operating system. [6] 16 colour RGB (4-bit) adaptive indexed palette images are a feature of the optional Colortrac ScanWorks software. [7] Languages supported: English, Chinese (Mandarin), Japanese, Korean, French, German, Italian, Russian, Spanish. [8] Microsoft WIA / STI is specified for the USB interface only. [Colortrac recommends Intel Pentium, Core Duo, Core 2 Duo, HT (Hyper-Threading) and AMD Athlon Dual Core processors, at least 1GB RAM, Gigabit ethernet, USB2 and Windows™ XP Home, Windows™ XP Professional or Windows™ Vista operating systems. SmartLF drivers support 32-bit and 64-bit processor architectures. Contact your supplier for advice on the optimum system configuration for your application.] [Colortrac SmartLF Gx+ scanners are designed to comply with ENERGY STAR, CB, CE, FCC, UL and RoHS standards and regulations.] Colortrac Ltd makes no warranty of any kind with respect to the information contained in this document and reserves the right to change specifications without notice. Colortrac and Smart LF® are trademarks of Colortrac Ltd. All other trademarks are the property of their respective owners.
Copyright © 2008 Colortrac Ltd. COLORTRAC SMARTLF WIDE FORMAT SCANNERS ARE DESIGNED AND MANUFACTURED BY COLORTRAC.



Scan confident. Scan Colortrac.